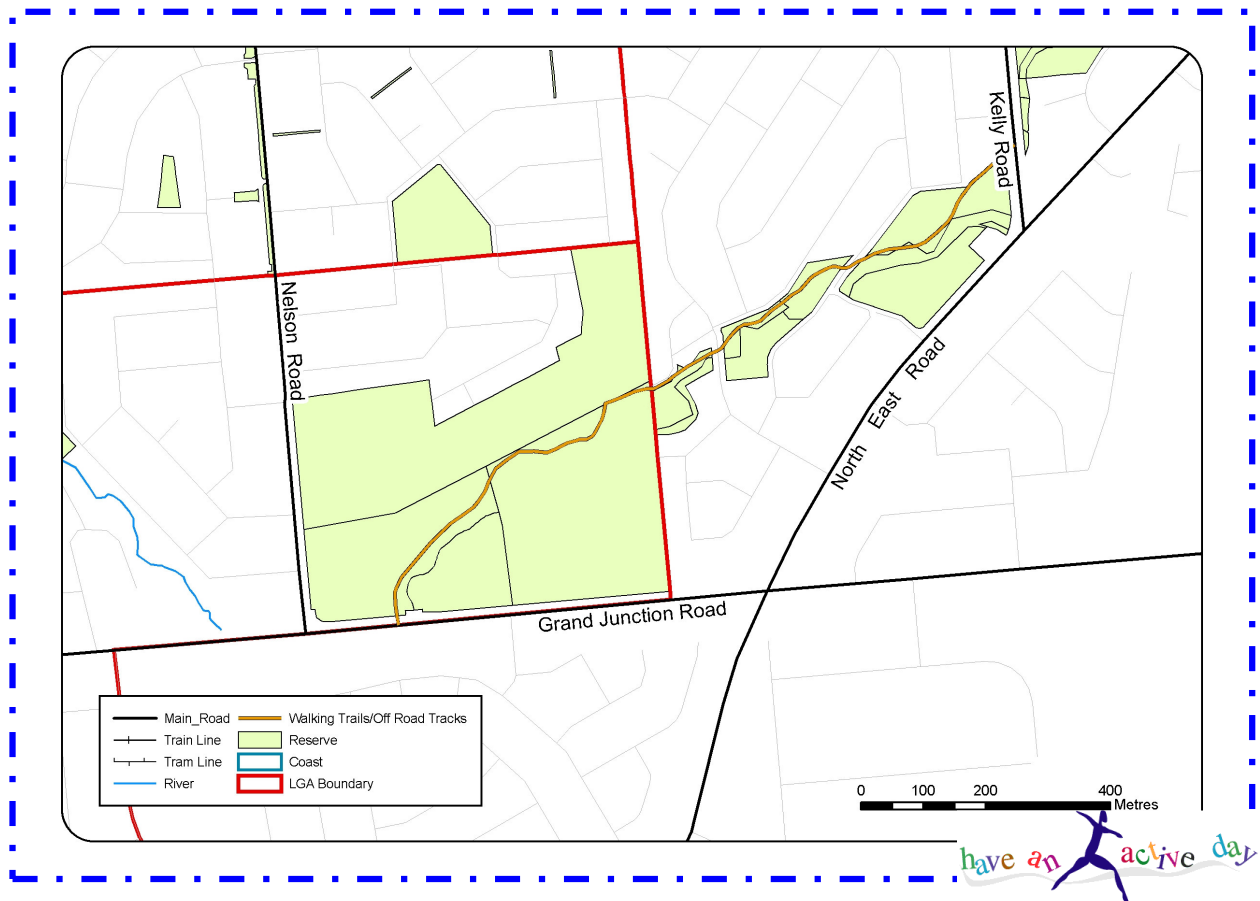


Title of trail: *Dry Creek Valley View Trail*



Great things about this trail:

Great things about this trail: This walk takes in the valley view golf course, Thomas Turner reserve and is a pleasant user friendly walk in an urban environment.

Length of trail: *1.5 km (3km return)*

Time to walk trail: *20 mins (40 mins return)*

Trail begins at: *Nelson Road*

Trail ends at: *Kelly Road*

How to get there and home by public transport: *Buses T500 (connecting to 503, 506)*

Car parking: *Nelson Road*

Public Toilets available: *Para Hills, Wilkinson Road, Para Hills*

Star rating of trail: *******

